

Tersus Platform Source Setup

(Opensource)

Intro

The Tersus Platform is comprised of 2 parts:

1. A modelling (visual programming) environment implemented as an eclipse rcp.

The platform creates XML files (with a .trp extension) which completely define the application on all tiers. i.e. it defines the UI (html+css+js), client-side processing (js), server-side processing (java) and database access (sql through jdbc).

2. A runtime engine which interprets the code (.trp files + optional html created using the modelling platform (as explained above), and executes it.

You can find additional information regarding our product in our site @ <http://www.tersus.com>. We suggest you start in <http://www.tersus.com/#Id=24>.

At present the environment requires mostly legacy versions of the various 3rd party components.

Please make sure you're installing the versions specified below, even if they are not the latest.

Upgrading to the latest versions of 3rd-party components is not our main priority at the moment

The procedure outlined below was tested on Windows **10 Pro Version 2004 (64 Bit)**, but should work on any platform supported by **Eclipse**.

Downloads

All versions and download locations are as-of 20th October 2020

Component	Version	Minor version	Download
	Use the versions specified below even if they are not up-to-date		
Java SE Development Kit	8	261	https://www.oracle.com/java/technologies/javase/javase-jdk8-downloads.html
Eclipse Standard	4.3 Kepler	SR2 Java 8	https://www.eclipse.org/downloads/packages/release/kepler/sr2-java8-patches
Graphical Editing Framework GEF All-In-One SDK	3.9.1	Maintenance 433	http://download.eclipse.org/tools/gef/updates/legacy/releases/ (eclipse update site)
Ant	1.9	15	https://ant.apache.org/bindownload.cgi
Ant XMLTask library	1.16		http://www.oopsconsultancy.com/software/xmltask/
Ant Contrib library	1.0b3		http://ant-contrib.sourceforge.net/
JavaMail	1.6	2	https://javaee.github.io/javamail/
Java Advanced Imaging (JAI)	1.1	2_01	https://www.oracle.com/java/technologies/java-archive-downloads-java-client-downloads.html
Tersus Opensource project source	2.3	3	Git clone - <code>https://bitbucket.org/tersusvpp/tersus.opensource.git</code> or <code>git@bitbucket.org:tersusvpp/tersus.opensource.git</code>

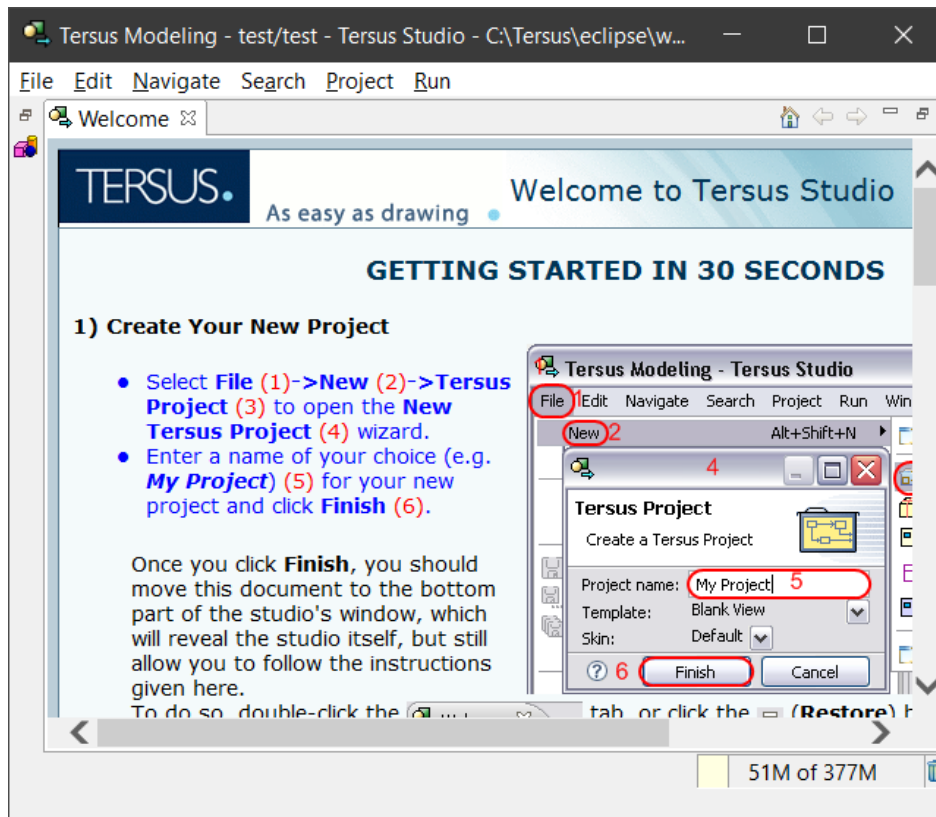
Install Procedure

1. Install **JDK**
2. Install **Eclipse**
3. Install **GEF All-in-One SDK** via update site:
https://download.eclipse.org/tools/gef/updates/legacy/releases/3.9.1_gef-maintenance_433
4. Install updated **Ant** version (via **Window > Preferences > Ant > Runtime**)
Add **tools.jar** (from JDK's **lib** folder)
5. Add **Ant XMLTask** library to Ant Runtime
6. Add **Ant Contrib** library to Ant Runtime
7. Add **JavaMail - javax.mail.jar** to the build path of the following plugins: **tersus.appserver**, **tersus.library**, **tersus.workbench** (via Right-click > **Build Path > Add External Archives...**)
8. Add Java Advanced Imaging (JAI) to the build path of the following plugins: **tersus.library**
9. Create a new workspace
10. Import all projects from **tersus.opensource** git repository
11. Build all projects (via **Project > Clean...**)
12. Verify that the **Problems** view contains no errors. You will see a lot, as in thousands, of warnings, and that's ok
13. Run the **tersus/build-product.xml** ant script, and verify that there are no errors in the **Console** view.
14. Launch **tersus/Tersus Studio.launch** (via **Run > Run Configuration.. > Eclipse Application**)

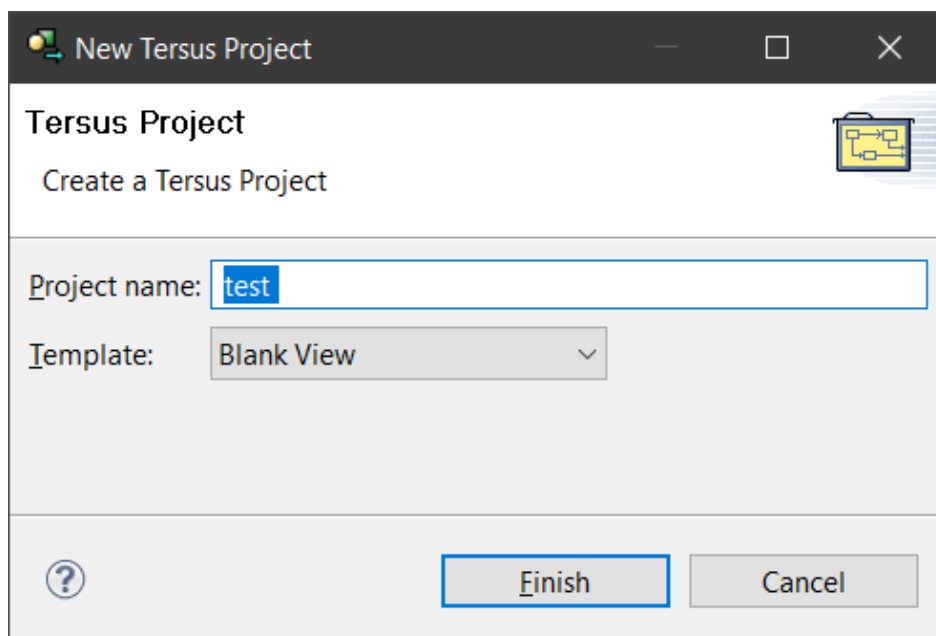
Verification Procedure

Studio (Modelling Environment)

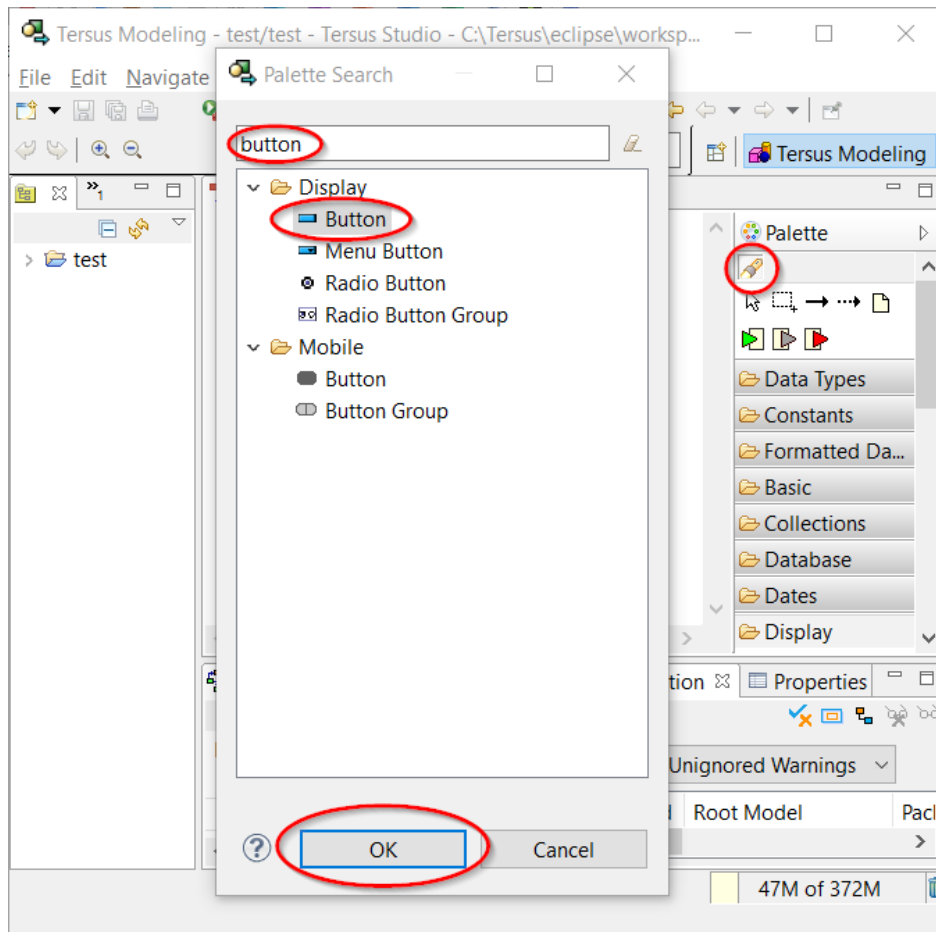
1. Launch the Studio



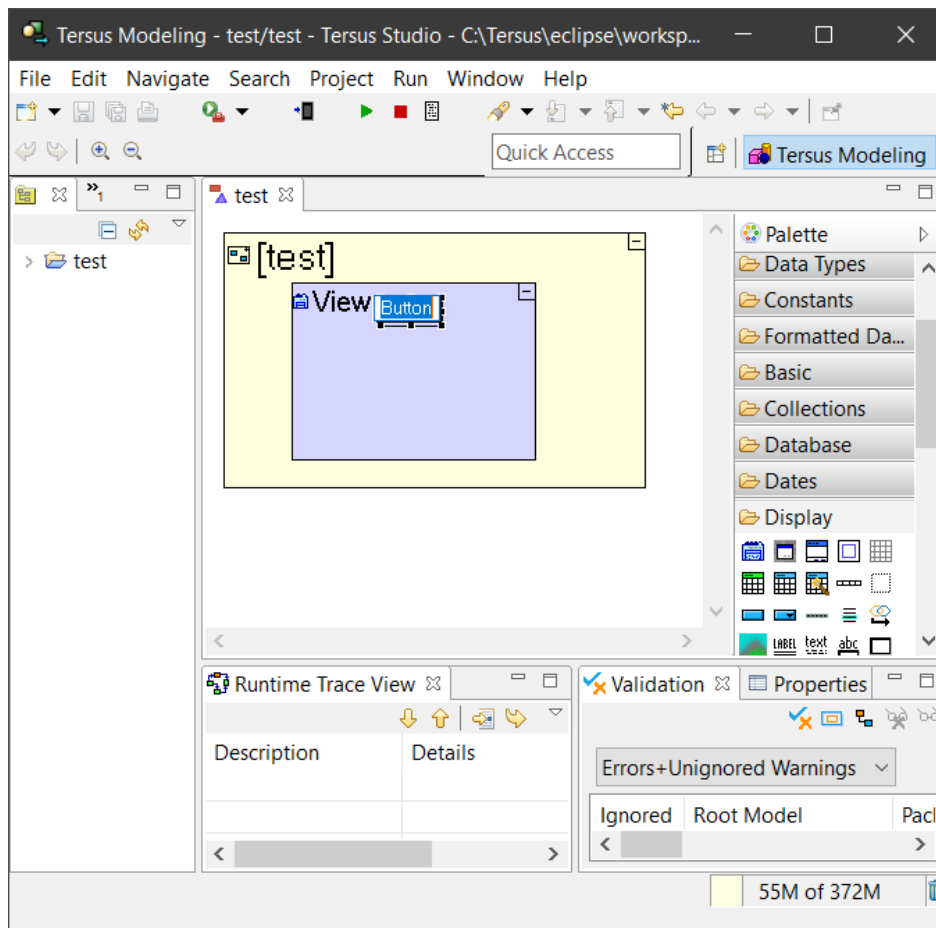
2. Close the **Welcome** tab
3. Open the **New Tersus Project** wizard (via **File > New > Tersus Project**)
4. In the wizard, name the project (e.g. **test**), leave the **Template** as is, and **Finish**



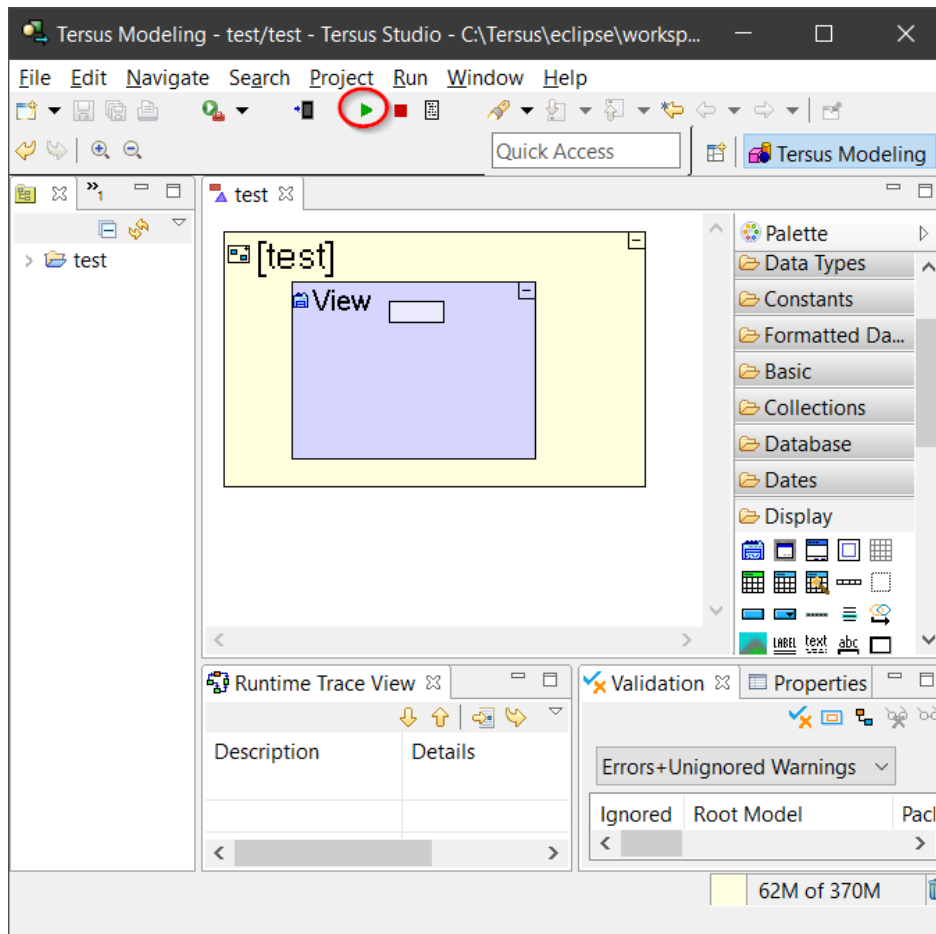
5. In the **Palette** (on the right), click the **Search** icon, enter **button**, select the **Button** option, and press **OK**



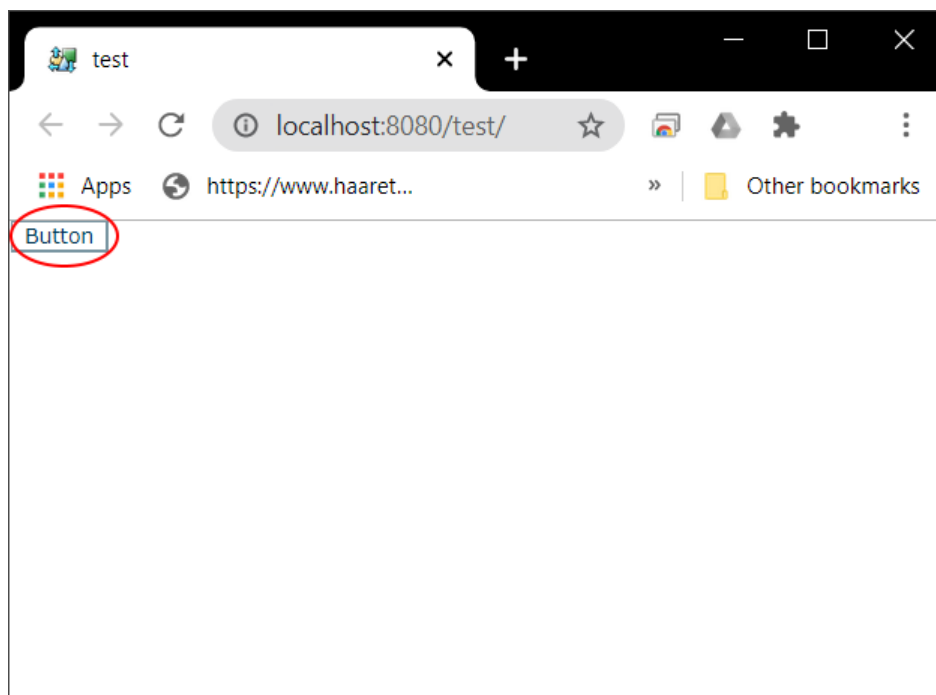
6. In the **test** tab (Model Editor), click inside the **View** element



7. Save the model (**CTRL+S**)
8. In the toolbar, press the **Launch the application** button



9. Your browser should open with the application running, displaying a button (which does nothing)



Server (Deployment)

Follow the instructions in <http://www.tersus.com/#Id=242> with the following change:

In the **Install Tersus Server** step, instead of downloading the server use the one built by `tersus/build-product.xml` in step 13 of the Install procedure above.

I.e., `[Tersus Server root]` should point to `tersus.appserver/build`.

If you've reached this point, you're done :-)